

HUNTERS[®]

HERE TO GET *you* THERE



Oak House

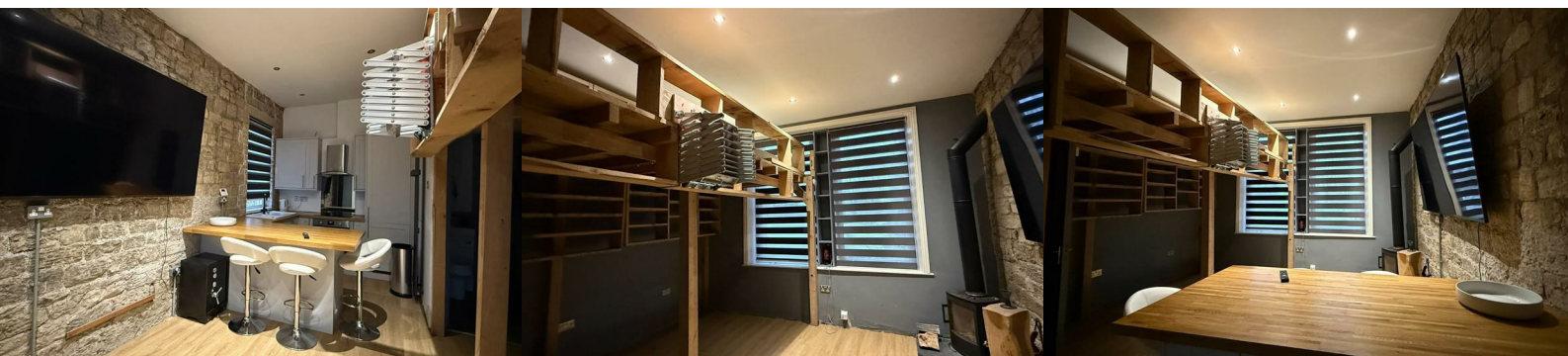
Park Road, Dewsbury, WF12 8BE

£550



Presenting this well-appointed studio flat to let, situated within Oak House on Park Road, Dewsbury, West Yorkshire. This inviting property is maintained in good condition, offering an excellent opportunity for single working professionals seeking comfort and convenience in an urban setting.

The flat comprises an open-plan studio layout, seamlessly integrating living and sleeping areas to maximise space and light. The dedicated kitchen is well-equipped for modern living. Located in a highly accessible area, residents will benefit from excellent public transport links, ensuring ease of commute to surrounding areas. The vicinity boasts a range of local amenities, including shops, cafes, and essential services. This property is exceptionally suited for single working professionals seeking a modern studio flat with easy access to transport, amenities, and recreational facilities. Early viewing is highly recommended.



Area Map



Floor Plans



Energy Efficiency Graph



These particulars are intended to give a fair and reliable description of the property but no responsibility for any inaccuracy or error can be accepted and do not constitute an offer or contract. We have not tested any services or appliances (including central heating if fitted) referred to in these particulars and the purchasers are advised to satisfy themselves as to the working order and condition. If a property is unoccupied at any time there may be reconnection charges for any switched off/disconnected or drained services or appliances - All measurements are approximate.

THINKING OF SELLING? If you are thinking of selling your home or just curious to discover the value of your property, Hunters would be pleased to provide free, no obligation sales and marketing advice. Even if your home is outside the area covered by our local offices we can arrange a Market Appraisal through our national network of Hunters estate agents.